

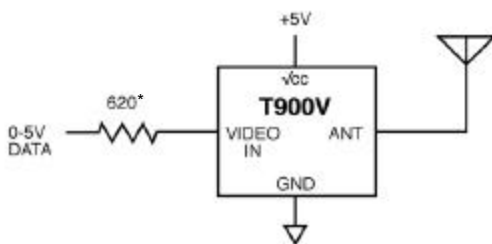
The following guidelines are provided here for using the R900V and T900V video modules for high-speed (<5 mbps) data links.

Figure 1 shows the transmitter setup, and Figure 2 is the receiver setup for 1 mbps data rates. The additional receiver circuitry is necessary as the output of the video module is AC coupled and of

inappropriate voltage levels for a digital interface.

Data Encoding- Manchester encoding is preferred; otherwise avoid long strings of zero's or ones. Target a long-term duty cycle of 45 to 50%. See AN-102 for further information on Data Encoding Formats.

Figure 1.



* Sets Deviation for ± 1.5 MHz

Figure 2.

